



**PDL**

## NEW PRODUCT DATA AND APPLICATION SHEET

**CATALOGUE #**

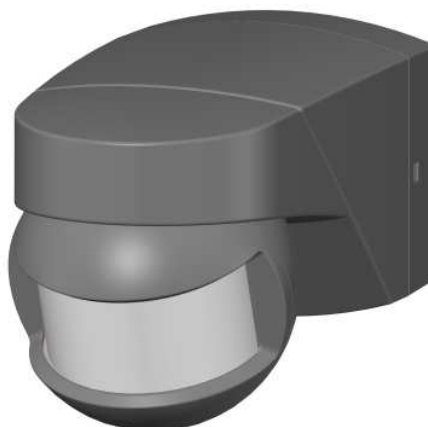
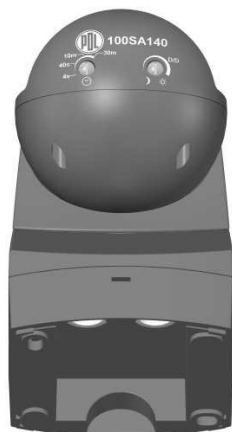
100SA140BK  
100SA140WH

**COLOUR.**

Black  
White

**BARCODE #**

9416175236242  
9416175236709



**DESCRIPTION**

**140° OUTDOOR MOTION SENSOR.**

**BOX QUANTITY :**

1.

**OUTER QUANTITY :**

45

**FEATURES**

IP44 Environmental protection.  
Adjustable Time, Lux, Sensitivity.  
Double insulated.  
Surge protection.  
Can be mounted on flat surfaces as well as internal and external corner mounting.  
Sensor blanking strips to mask areas not required to be monitored.

**SPECIFICATIONS**

140 degrees circular field of view.  
Forward range of 12 metres diameter max @ 2.5 metres height  
Time settings 4 seconds to 30 minutes.  
Adjustable lux 2 to 2000 lux max.  
230/240 volts AC 50Hz.  
Ratings- 1000W MAX Incandescent.  
1000W MAX Halogen  
500W MAX Fluorescent.  
100W MAX Compact Fluorescent.  
100W MAX Motor.

**APPLICATIONS**

Security in domestic, commercial or industrial premises.  
Power saving with automatic switching.  
Convenience.

**FAQ's**