



**KRUX**<sup>®</sup>  
experience sound

our passion, your experience



01	The Krix Story
04	Bookshelf Speakers
12	Centre Speakers
22	Floor Standing Speakers
32	Sub Woofer Speakers
40	Concealed Speakers
50	On-Wall Speakers
56	Outdoor Speakers
62	Accessories

## the krix story

As a teenager Scott Krix was in love with sound. Scott tinkered in the garage with kit amplifiers, and made experimental speakers with scavenged drivers from old radios. Scott had a dream to make Australian speakers that could compete successfully on the world market.

More than 34 years on, Scott's dream is now a reality. The Krix team manufacture high quality loudspeakers for home and commercial use. With close to 2200 commercial cinema installations globally, you have possibly already experienced Krix sound.

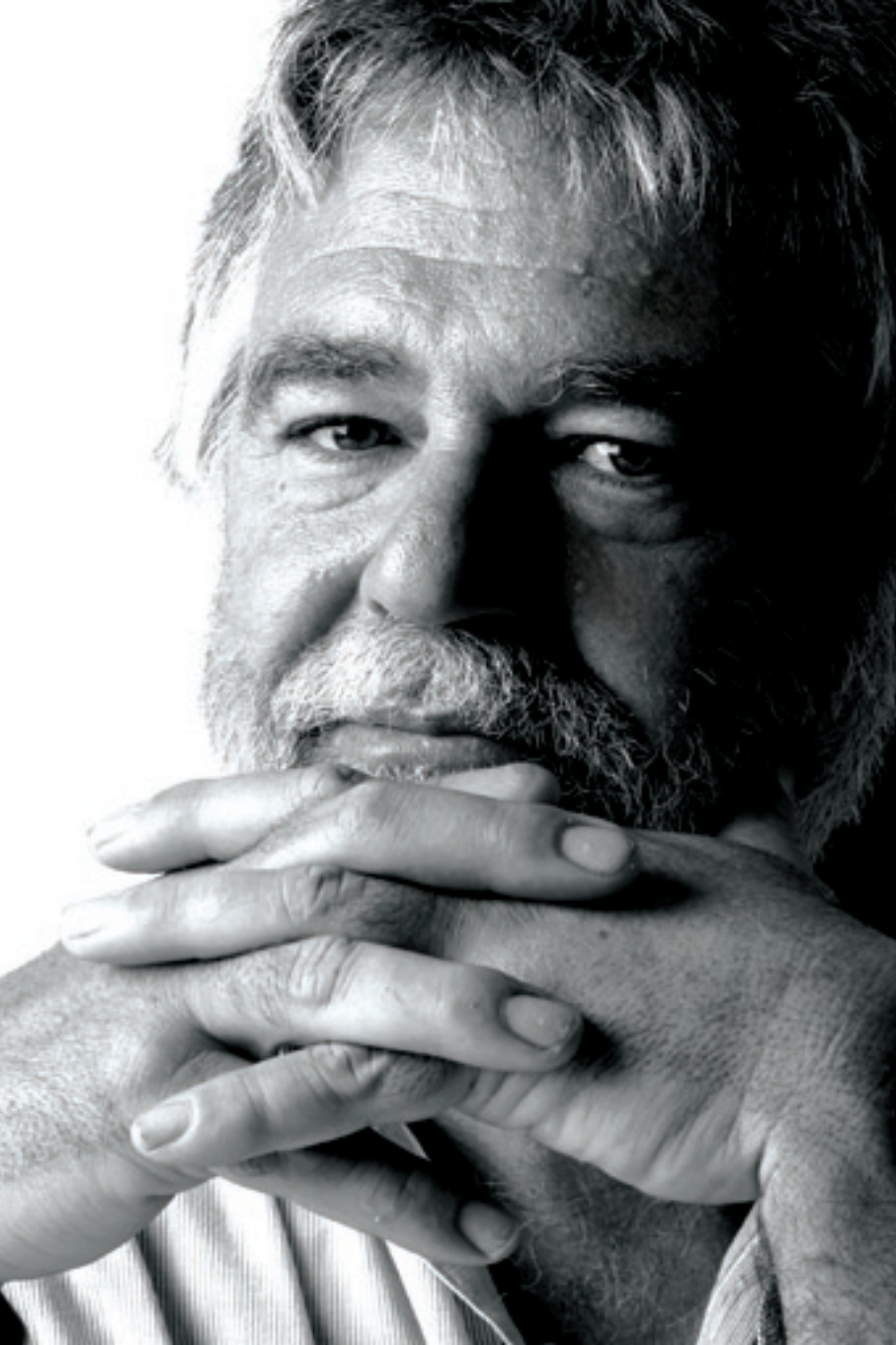
Distributed throughout the world, Krix are at the leading edge of loudspeaker design. Utilising the latest test equipment, 3D modelling and computer simulated design technology, Krix's innovative research and development team are a pioneering force in the Australian loudspeaker industry.

Whether you are looking for your first pair of stereo speakers or your own ultimate home theatre experience, Krix will exceed your expectations. Krix's range of loudspeakers deliver the experience of sound.



Scott Krix founder and designer





# Bookshelf Speakers



Krix's range of compact speakers deliver unprecedented sound quality for size. Designed for stereo or home theatre use, these bookshelf models convey high fidelity sound that is unmatched in this category. Solid construction features, internal bracing, standard and custom finishes using real wood veneers or paint lacquers.



brix

dynamic experience



Brix is designed to be small in size yet big in sound, delivering detailed accuracy and stunning clarity. Versatile for any application, from compact stereo speakers, rear channel speakers in your surround sound system or for use in a second zone, Brix are ideal. The two-way bass reflex design features a 25mm textile dome tweeter and a 100mm diameter bass driver. Brix is a little speaker that will offer a dynamic experience.

---

*“What was simply stunning was the stereo imaging that’s possible with the Brix, particularly if you stand-mount them around a metre out from a rear wall. With some careful positioning, we were rewarded with sound that was almost headphone-like in its spatial treatment of the two channels.” – Australian Hi-Fi*

Frequency Range	75Hz - 20kHz in room response
Power Handling	Maximum 60 watts RMS amplifier power
Sensitivity	87dB for 2.83 volts at 1 metre
Configuration	4 inch 2-way
Bass Driver	Fibre reinforced moulded polymer basket with a nominal 100mm (4") doped paper cone. 25mm (1") voice coil wound on high powered aluminium former. Double magnet shielded
Tweeter	25mm (1") fabric dome. Ferro fluid cooled Neodymium magnet
Crossover Point	3kHz
Impedance	Nominally 6 ohms
Enclosure Type	Bass reflex, rear vented
Dimensions	230mm high x 150mm wide x 190mm deep
Material	12mm MDF
Finish	Vinyl or lacquered timber veneer
Volume	3 litres internal
Weight	3kg each
Mounting	Provisions made for bracket mounting

equinox

phenomenal experience



Developed to dispel the myth that small speakers cannot sound big, the Equinox delivers phenomenal sound for size. For use in any high fidelity application, the Equinox has no competition in this class. Featuring ultra low flux leakage shielding on the 130mm bass driver and 28mm tweeter, the Equinox can be placed close to your television. Equinox are a phenomenal experience.

*"A High End Loudspeaker For A Bargain Price – The question must be: what faults has this little boy? My skilled and experienced friend has also had problems to point out any serious faults in the three weeks while the Krix Equinox have played daily, both as a test object and purely and simply as a music promoter. Possible faults must lie in the limitations, which is the actual size. Facts are that this product must have been subject to a long, and at times laborious amount of tweaking and maturing with a producer who has gone to unusually professional lengths to make it work." – Audio Magazine – Norway*



Frequency Range	45Hz - 20kHz in room response
Power Handling	Maximum 100 watts RMS amplifier power
Sensitivity	88dB for 2.83 volts at 1 metre
Configuration	5 inch 2-way
Bass Driver	Cast aluminium basket with a nominal 130mm (5") doped curvilinear paper cone. 25mm (1") voice coil wound on high powered aluminium former, with copper shorting ring. Vented and double magnet shielded
Tweeter	28mm (1") doped fabric dome. Ferro fluid cooled. Double magnet shielded
Crossover Point	1.8kHz
Impedance	Nominally 6 ohms
Enclosure Type	Bass reflex, rear vented
Dimensions	295mm high x 175mm wide x 235mm deep
Material	12mm MDF with internal bracing
Finish	Vinyl or lacquered timber veneer
Volume	8 litres internal
Weight	6kg each

acoustix

experience acoustic intricacy



The Acoustix loudspeaker brings a level of room placement flexibility not before seen in this type of Krix design. The dual front ports make this speaker the perfect choice for use in TV cabinets and custom joinery, eliminating 'boomy' bass qualities found when using rear ported speakers in this type of application. The Acoustix can be used as the basis for a high quality stereo system, or add the matching Graphix centre channel to the mix to deliver precise timbral matching to the Acoustix mains / rear channels. An acoustically intricate experience.

Frequency Range	50Hz - 20kHz in room response
Power Handling	Maximum 120 watts RMS amplifier power
Sensitivity	89dB for 2.83 volts at 1 metre
Configuration	Point source dual 5 inch 2-way
Bass Drivers	Fibre reinforced moulded polymer baskets with 2 x nominal 130mm (5") doped paper cones. 25mm (1") voice coil wound on high powered aluminium former, with vented magnet assembly. Fully shielded
Tweeter	28mm (1") doped fabric dome. Ferro fluid cooled. Neodymium magnet
Crossover Point	2.1kHz
Impedance	Nominally 4 ohms
Enclosure Type	Bass reflex, front vented with internal / external flaring
Dimensions	450mm high x 180mm wide x 300mm deep (including grille)
Material	17mm MDF with internal bracing
Finish	Vinyl or lacquered timber veneer
Volume	14 litres internal
Weight	10kg each



Centre Speakers

Make every chair the best seat in your house with a Krix centre speaker. Krix's centre speakers reproduce vocals and other complex information accurately, optimizing imaging and sound stage. The centre channel in your home theatre system can deliver around 70% of the action and should be of a similar sonic quality to your main speakers. For home theatre applications and music listening pleasure, a Krix centre speaker will enhance your sound experience. Krix centre speakers (excluding the Epicentrix) are magnetically shielded to allow placement close to your CRT television.



microcentrix

discreet experience



Micro Centrix is compact while providing detailed vocal imagery. Comprising dual 100mm bass drivers matched with a 25mm tweeter this compact speaker delivers amazing depth and clarity demanded by movie soundtracks. Recommended for use with smaller systems, this speaker will deliver a discreet experience placed either on top of your television or in a cabinet.

Frequency Range	75Hz - 20kHz in room response
Power Handling	Maximum 80 watts RMS amplifier power
Sensitivity	87dB for 2.83 volts at 1 metre
Configuration	Point source dual 4 inch 2-way
Bass Drivers	Fibre reinforced moulded polymer baskets with 2 x nominal 100mm (4") doped paper cones. 25mm (1") voice coil wound on high powered aluminium former Double magnet shielded
Tweeter	25mm (1") fabric dome. Ferro fluid cooled Neodymium magnet
Crossover Point	2kHz
Impedance	Nominally 8 ohms
Enclosure Type	Bass reflex, rear vented
Dimensions	150mm high x 360mm wide x 145mm deep
Material	12mm MDF
Finish	Vinyl or lacquered timber veneer
Volume	5 litres internal
Weight	4kg

graphix

experience acoustic intricacy



The Graphix centre channel will deliver precise timbral matching to the Acoustix main speakers. The same tweeter used in the Acoustix, Apex, Phoenix and Harmonix floorstanders means the Graphix can be used with a wide range of Krix products. Small and compact, the Graphix is the perfect choice for use in TV cabinets and custom joinery and the dual front ports eliminate 'boomy' bass qualities found when using rear ported speakers in this type of application. The Graphix delivers an acoustically intricate experience every time.

Frequency Range	50Hz - 20kHz in room response
Power Handling	Maximum 120 watts RMS amplifier power
Sensitivity	89dB for 2.83 volts at 1 metre
Configuration	Point source dual 5 inch 2-way
Bass Drivers	Fibre reinforced moulded polymer baskets with 2 x nominal 130mm (5") doped paper cones. 25mm (1") voice coil wound on high powered aluminium former, with vented magnet assembly. Fully shielded
Tweeter	28mm (1") doped fabric dome. Ferro fluid cooled. Neodymium magnet
Crossover Point	2.1kHz.
Impedance	Nominally 4 ohms
Enclosure Type	Bass reflex, front vented with internal / external flaring
Dimensions	180mm high x 450mm wide x 300mm deep (including grille)
Material	17mm MDF with internal bracing
Finish	Vinyl or lacquered timber veneer
Volume	14 litres internal
Weight	10kg

vortex

experience cinematic strength



The Vortex is based on the highly successful Epicentrix and has been designed to deliver perfect timbral matching to the Harmonix main speakers. This same tweeter is also used in the Phoenix and Apex floorstanders meaning the Vortex can also be used with a wide range of Krix products. The dual 165mm bass drivers, single midrange and 28mm tweeter used in the Vortex are identical to those in the Harmonix ensuring the 'audio stage' is seamless in it's transition from left to right. Focus is on vocal clarity, midrange depth and a dynamic bass response. Experience the sonic strength the Vortex will bring to your home theatre system.

*"I set the Vortex to 'Large' with my home theatre receiver to ensure it received all the bass, spun up the disc, advanced the volume control to a ridiculous level, and waited to see what would happen... the Vortex delivered a musical performance with tightly controlled and remarkably deep bass... That is indeed impressive." – Australian HiFi – Australia*

Frequency Range	35Hz - 20kHz in room response
Power Handling	Maximum 180 watts RMS amplifier power
Sensitivity	91dB for 2.83 volts at 1 metre
Configuration	4 driver 3-way bi-wirable / bi-ampable
Bass Drivers	2 x nominal 165mm (6 <sup>1</sup> / <sub>2</sub> " ) laminated polypropylene cones. 33mm (1 <sup>1</sup> / <sub>4</sub> " ) voice coil wound on high powered aluminium former, with ventilated spider and aluminium flux stabilization ring for low distortion
Midrange Driver	1 x nominal 130mm (5" ) coated paper cone. 26mm (1" ) voice coil wound on high powered aluminium former, using copper shorting ring and oversized magnet for lower distortion
Tweeter	28mm (1" ) fabric dome. Ferro fluid cooled. Neodymium magnet
Crossover Point	340Hz & 2.1kHz
Impedance	Nominally 4 ohms
Enclosure Type	Dual bass chambers, bass reflex & sealed midrange chamber, front vented with internal / external flaring
Dimensions	230mm high x 725mm wide x 383mm deep (including grille)
Material	17mm MDF enclosure, heavily braced
Finish	Vinyl or lacquered timber veneer
Volume	42 litres internal
Weight	24kg

epicentrix

experience vocal precision



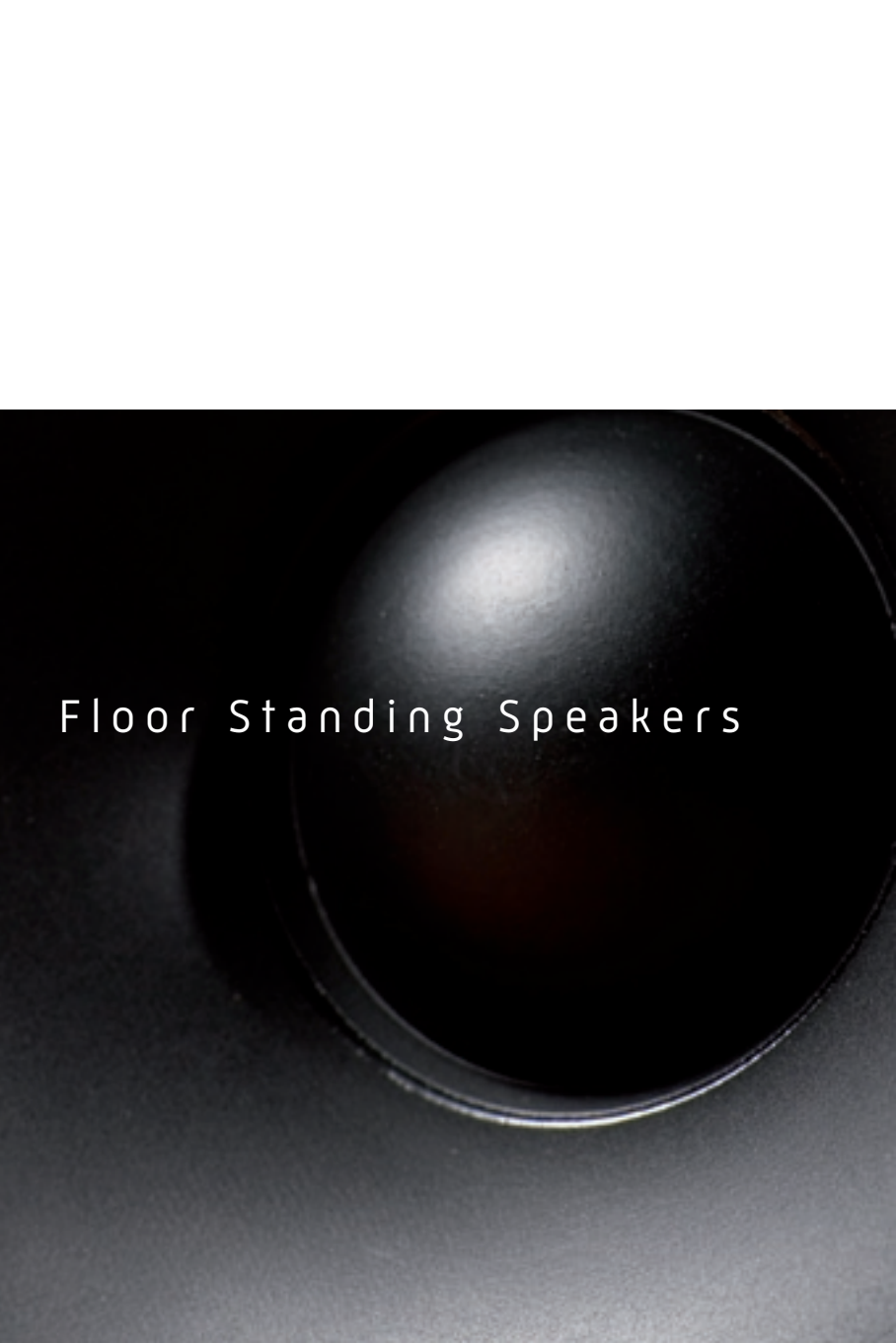
Home theatre on a grand scale: this centre channel speaker is designed to truly match the pace of our high energy Neuphonix floorstanding speakers. Like the Neuphonix, multiple 130mm bass drivers deliver punchy, ground-shaking bass energy. A 130mm midrange driver and 26mm tweeter complete the picture, reproducing vocals and sound effects with meticulous precision and depth that will defy the dimensions of your room. Put yourself at the epicentre of the action.

*“Beautifully built, the Epicentrix matches the Neuphonix perfectly and is without doubt one of the most articulate and convincing centre channel loudspeakers I’ve ever heard.”*

– Audio & Video Lifestyle – Australia

Frequency Range	40Hz - 40kHz in room response
Power Handling	Maximum 200 watts RMS amplifier power
Sensitivity	90dB for 2.83 volts at 1 metre
Configuration	6 driver 3-way bi-wirable / bi-ampable
Bass Drivers	4 x nominal 130mm (5") coated paper cones. 26mm (1") voice coil wound on high powered aluminium former provides good linearity and driver control at large cone excursion
Midrange Driver	1 x nominal 130mm (5") coated paper cone. 26mm (1") voice coil wound on high powered aluminium former, using copper shorting ring and oversized magnet for lower distortion
Tweeter	26mm (1") dual concentric diaphragm with wave-guide centre plug for controlled directivity. Non-reflective dual chambered magnet structure with copper shorting ring to lower distortion
Crossover Points	340kHz & 2.5kHz
Impedance	Nominally 4 ohms
Enclosure Type	Dual chambers – sealed midrange chamber, with bass reflex main chamber, front vented with internal / external flaring
Dimensions	220mm high x 900mm wide x 365mm deep
Material	19mm MDF enclosure, heavily braced, with 25mm MDF front baffle
Finish	Lacquered timber veneer
Volume	45 litres internal
Weight	24kg each





Floor Standing Speakers

The pursuit of optimum sound is a passion at Krix.  
Designed using the highest quality components and  
detailed construction, Krix's floor standing speakers offer  
you an award winning high fidelity experience. This extensive range will suit  
supreme stereo listening or your ultimate home theatre set-up. For serious  
room-filling sound with smooth deep bass Krix's floor standing speakers are  
an experience you will want to enjoy everyday.



apex

experience smooth sophistication



Apex offers a smooth sophisticated listening experience. Apex has a 165mm bass driver and a 28mm tweeter in a compact floor standing cabinet, an elegant addition to your living room. Apex's superb stereo imaging and depth has plenty of low frequency and exceptional lower midrange tones.

*"The design work put into the integration of bass driver and tweeter seems to have paid off with the result that the midband sounds effortlessly natural and unforced. It's a tricky balance to achieve with a 2-way design, but in this case it works a treat. There's an impressive degree of attack and enthusiasm generated by the Apex with a tuneful and articulate bottom end that lends ample weight to the track and there's no shortage of speed or resolution either.*

*There's a lot to like about the sound quality of these new Apex speakers and the build quality is also up to Krix's usual high standards. These new Krix Apex's are still great value and even more of a hoot'n little speaker than ever before."* – Audio & Video Lifestyle – Australia

Frequency Range	50Hz - 20kHz in room response
Power Handling	Maximum 100 watts RMS amplifier power
Sensitivity	86dB for 2.83 volts at 1 metre
Configuration	6 1/2 inch 2-way
Bass Driver	Fibre reinforced moulded polymer basket with a nominal 165mm (6 1/2") doped paper cone. 25mm (1") voice coil wound on high powered aluminium former
Tweeter	28mm (1") doped fabric dome. Ferro fluid cooled. Double magnet shielded
Crossover Point	2kHz
Impedance	Nominally 8 ohms
Enclosure Type	Bass reflex, rear vented
Dimensions	850mm high x 205mm wide x 295mm deep
Material	17mm MDF, heavily braced
Finish	Vinyl or lacquered timber veneer
Volume	36 litres internal
Weight	14kg each



phoenix

involving big bass experience



The Phoenix have risen from the ashes of what was unquestionably Krix's most awarded and respected loudspeaker, the Lyrix / Lyrix Gold. Tonal depth, imaging and balanced musicality are highlights in this slim floorstanding design. Involve yourself in the experience of sound with the Phoenix.

*"Commencing then with Pavarotti in the role of Lieutenant B. F. Pinkerton in Decca's 1974 recording of Madama Butterfly, the Phoenix gave tremendous body and depth to the tenor's voice. In the upper register, the 'King of the High C' himself sounded assured and grain free through the Krix tweeters. The overall sound was full and satisfying with lovely amounts of tight bass. With the Miles Davis recording 'Round About Midnight', the Krix were open and transparent when playing Miles' solos, yet bopped along with the rest of the band when the tempo picked up. The transparency could be put down to a couple of things, but I think it is the crossover which must take most of the credit here. I'm sure it was a process of careful listening and adjustment during the development phase."* – Audio & Video Lifestyle – Australia

Frequency Range	35Hz - 20kHz in room response
Power Handling	Maximum 150 watts RMS amplifier power into 4 ohms
Sensitivity	90dB for 2.83 volts at 1 metre
Configuration	Point source dual 6 1/2 inch 2-way bi-wirable / bi-ampable
Bass Drivers	Fibre reinforced moulded polymer baskets with 2 x nominal 165mm (6 1/2") doped paper cones. 25mm (1") vented magnet, voice coil wound on high powered aluminium former
Tweeter	28mm (1") doped fabric dome. Ferro fluid cooled. Double magnet shielded
Crossover Point	1.9kHz
Impedance	Nominally 4 ohms
Enclosure Type	Bass reflex, rear vented with internal / external flaring
Dimensions	935mm high x 205mm wide x 320mm deep
Material	17mm MDF, heavily braced
Finish	Vinyl or lacquered timber veneer
Volume	39 litres internal
Weight	19kg each



harmonix

experience eloquence



Whether it's stereo listening or the rigors of home theatre you're after, the Harmonix will deliver in exemplary fashion. The full length grille 'hides' a four driver 3-way design, comprising two 165mm bass drivers, a single 130mm midrange and a 28mm tweeter. Harmonix project a deep, tight bass response via their extended bass shelf alignment, a dynamic and non-fatiguing vocal mid-band with lucid, detailed highs. Harmonix – experience eloquence.

*"No matter what I played, the stereo imaging always remained precise and focused... There was no compression on the loudest notes, and I never once missed out on hearing the softest of them. I confidently predict that the Krix Harmonix will become even more famous and lusted-after than their illustrious predecessors. These are high-class speakers that can do it all."* – Australian HiFi – Australia

Frequency Range	30Hz - 20kHz in room response
Power Handling	Maximum 180 watts RMS amplifier power
Sensitivity	90dB for 2.83 volts at 1 metre
Configuration	4 driver 3-way bi-wirable / bi-ampable
Bass Drivers	2 x nominal 165mm (6 1/2") laminated polypropylene cones. 33mm (1 1/4") voice coil wound on high powered aluminium former, with ventilated spider and aluminium flux stabilization ring for low distortion
Midrange Driver	1 x nominal 130mm (5") coated paper cone. 26mm (1") voice coil wound on high powered aluminium former, using copper shorting ring and oversized magnet for lower distortion
Tweeter	28mm (1") doped fabric dome. Ferro fluid cooled. Double magnet shielded
Crossover Point	340Hz & 2.2kHz
Impedance	Nominally 4 ohms
Enclosure Type	Dual chambers - sealed midrange chamber, with bass reflex main chamber, front vented with internal / external flaring
Dimensions	1060mm high x 220mm wide x 355mm deep
Material	17mm MDF enclosure, heavily braced
Finish	Vinyl or lacquered timber veneer
Volume	44 litres internal
Weight	28kg each

neuphonix

high energy experience



Neuphonix is involving, high energy, get up and move sound. Be excited by these elegantly refined speakers. The unique six driver arrangement has been designed for unprecedented reactive sound. Four custom designed 130mm bass drivers have speed, clarity and high power handling. With a single 130mm dedicated midrange and 26mm super audio tweeter you have extended frequency response to 40kHz. The bass response is exceptional; just see if you can stay seated.

*"...The use of four smaller bass drivers in place of one large one means that just as much bass energy is being sent out into the room while the speakers, dynamically at least, can still stop on a 20 cent piece."* – Audio and Video Lifestyle – Australia

Frequency Range	30Hz - 40kHz in room response
Power Handling	Maximum 200 watts RMS amplifier power
Sensitivity	90dB for 2.83 volts at 1 metre
Configuration	6 driver 3-way bi-wirable / bi-ampable
Bass Drivers	4 x nominal 130mm (5") coated paper cones. 26mm (1") voice coil wound on high powered aluminium former provides good linearity and driver control at large cone excursion
Midrange Driver	1 x nominal 130mm (5") coated paper cone. 26mm (1") voice coil wound on high powered aluminium former, using copper shorting ring and oversized magnet for lower distortion
Tweeter	26mm (1") dual concentric diaphragm with wave-guide centre plug for controlled directivity. Non-reflective dual chambered magnet structure with copper shorting ring to lower distortion
Crossover Points	340Hz & 2.5kHz
Impedance	Nominally 4 ohms
Enclosure Type	Dual chambers – sealed midrange chamber, with bass reflex main chamber, rear vented with internal / external flaring
Dimensions	1065mm high x 230mm wide x 430mm deep
Material	19mm MDF enclosure, heavily braced, with 25mm MDF front baffle
Finish	Lacquered timber veneer
Volume	68 litres internal
Weight	31kg each



Sub Woofer Speakers

The basic criteria for a subwoofer is to reproduce very low frequency energy. Krix's range of subwoofers do just that.

The range features paper cone drivers for high level low frequency reinforcement, clipping protection and automatic switch on circuitry when a signal is detected. Complement your stereo or home theatre system with a subwoofer to experience a cinema performance in your own home.



seismix 1

small space, big bass experience



The perfect subwoofer choice for those with space restrictions. The Seismix 1 will enrich your home theatre experience whether you have a small room, or you just don't wish to dedicate the floor space to accommodate a larger speaker. The Seismix 1 uses a 150 watt in-built amplifier, matched to a downward firing 200mm bass driver and vent, with the cabinet raised off the floor via specially moulded rubber feet. Simple and effective styling ensures that the Seismix 1 can be placed almost anywhere in your room, including custom joinery to deliver a small space, big bass experience.

Frequency Range	27Hz – 200Hz (-6dB) in room response. Low pass filter 50–200Hz, 2nd order. High pass filter to limit driver excursion below 26Hz
Bass Driver	Nominal 200mm (8") diameter doped paper cone driver, 38mm (1.5") voice coil wound on high powered aluminium former, with vented magnet assembly
Amplifier Power	150 watts RMS into the nominal 4 ohm driver Maximum instantaneous power 300 watts
Amplifier S/N	>85dB
Distortion – Input to Speaker	<0.2% – @ 130 watts RMS
Line Level Inputs	Left Input (mono) 130mV RMS for maximum output or Left + Right Input (stereo) 65mV RMS for maximum output
Output	116dB maximum SPL in room response
Auto Power On / Off	20 minute delay before switching to standby after no input signal
Phase Select	0° or 180° (relative to input signal)
Enclosure Type	Bass reflex, downward firing vent
Dimensions	375mm high x 395mm wide x 320mm deep
Material	17mm MDF
Finish	Vinyl or lacquered timber veneer
Volume	21 litres internal
Weight	11kg

seismix 3

deep experience



The Seismix 3 incorporates a new in-house designed 275mm driver, developed for high level low frequency reinforcement. Geometry enhancements within the magnet structure has seen linear cone travel increase by a massive 30% with superior driver control. Musicality has not been overlooked at the expense of sheer low frequency output, with the Seismix 3 able to deliver all the subtleties of a jazz quartet to a classical masterpiece. Get a deep bass experience with the Seismix 3.

Frequency Range	22Hz – 200Hz (-6dB) in room response. Low pass filter 50 – 200Hz, 2nd order. High pass filter to limit driver excursion below 26Hz
Bass Driver	Nominal 275mm (11") diameter doped paper cone driver, 50mm (2") voice coil wound on high powered Kapton former, with vented magnet assembly
Amplifier Power	220 watts RMS into the nominal 4 ohm driver Maximum instantaneous power 440 watts
Amplifier S/N	>85dB
Distortion - Input to Speaker	<0.2% - @ 200 watts RMS
Line Level Inputs	Left Input (mono) 220mV RMS for maximum output or Left + Right Input (stereo) 110mV RMS for maximum output
Output	122dB maximum SPL in room response
Auto Power On / Off	20 minute delay before switching to standby after no input signal
Phase Select	0° or 180° (relative to input signal)
Enclosure Type	Bass reflex, front vented
Dimensions	415mm high x 360mm wide x 390mm deep
Material	17mm MDF
Finish	Vinyl or lacquered timber veneer
Volume	43 litres internal
Weight	18kg



seismix 5

ground breaking experience



The Seismix 5 active subwoofer features intelligent circuitry, 400 watt amplifier and front porting for easy placement into cabinets or along side walls. A single 305mm bass driver delivers chest thumping bass with precision and control. The cabinet is heavily braced to eliminate unwanted vibrations. Seismix 5 is ground breaking in design and experience.

*“The Krix made the room throb. Bass drums also had their full potency unleashed by this very dynamic subwoofer. The powerful bass drum found in the track Penance from The Mission lacked nothing in its power and richness – even at very high listening levels. The Krix was also a powerful performer in the world of film. Some subwoofers will sound ‘good’ or ‘clean’ but the overwhelming sense I got from the Seismix 5 was that of power.” – Audio & Video Lifestyle – Australia*

Frequency Range	16Hz - 150Hz [-6dB] in room response
Bass Driver	Nominal 305mm (12") diameter paper cone driver developed for high level, low frequency reinforcement and large linear cone travel
Amplifier Power	400 watts RMS into the nominal 4 ohm driver Maximum instantaneous power 800 watts
Amplifier S/N	>70dB
Distortion – Input to Speaker	<0.1% - @ 80 watts RMS
Line Level Inputs	Left Input (mono) Lo – 900mV RMS for maximum output Hi – 100mV RMS Left + Right Input (stereo) Lo – 450mV RMS for maximum output Hi – 50mV RMS
Output	122dB maximum SPL in room response
Auto Power On / Off	15 minute delay before switching to standby after no input signal
Phase Select	0° or 180° (relative to input signal)
Enclosure Type	Bass reflex, front vented, heavily braced
Dimensions	460mm high x 395mm wide x 440mm deep
Material	19mm and 25mm MDF
Finish	Vinyl or lacquered timber veneer
Weight	30kg

# Concealed Speakers



Your friends and family will wonder where the exceptional sound is coming from and you won't need to dust them. Whether the application is for multi-room sound, home theatre or background music, Krix's concealed speakers are crowd pleasers. With the same high level performance of bigger sized speakers, Krix's concealed speakers are specifically designed as enclosed units to optimize overall sound reproduction.



holographix

invisible experience



Similar in size to a down light and able to be painted to blend into any décor, the Holographix is almost invisible. The Holographix produces a smooth and accurate frequency response with good low frequency extension, and is moisture resistant, perfect for your BBQ area, home office or indulgent bathroom. Use them in pairs or in multiples of two for large area coverage.

---

*“For such small drivers and enclosures, remarkably substantial was my first quite surprised impression. They are a full range loudspeaker and it was all there – bass, midrange and treble.” – Audio and Video Lifestyle – Australia*

Frequency Range	90Hz - 20kHz in room response
Power Handling	Minimum 20 watts – Maximum 40 watts RMS amplifier power
Sensitivity	87dB for 2.83 volts at 1 metre
Configuration	3 inch full range
Bass Driver	Nominal 75mm (3") polypropylene cone, with a 20mm (3/4") voice coil and neodymium magnet
Impedance	Nominally 8 ohms
Enclosure Type	Infinite baffle
Dimensions	95mm diameter x 108mm deep
Mounting cut-out diameter	83mm
Finish	White (can be painted to match your décor)
Input terminals	Push type connectors
Weight	0.5kg each

hemispherix

spatial experience

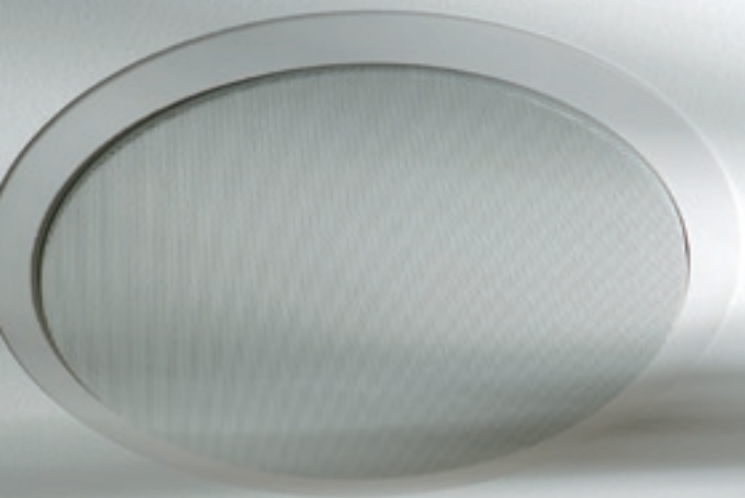


Fitting in nicely between the Holographix and Atmospherix, the Hemispherix is the third product released in the range of Krix in-ceiling speakers. Housed in a shallower and narrower enclosure than the Atmospherix, the Hemispherix uses a single 4 inch bass driver and the identical 25mm eyeball tweeter as its bigger brother. For small to medium rooms, the Hemispherix will deliver a spatial experience.

Frequency Range	65Hz - 20kHz in room response
Power Handling	Maximum 60 watts RMS amplifier power
Sensitivity	86dB for 2.83 volts at 1 metre
Configuration	4 inch 2-way
Bass Driver	Nominal 100mm (4") doped paper cone. 25mm (1") voice coil wound on high temperature Kapton former
Tweeter	25mm (1") fabric dome, adjustable 'eyeball'
Crossover Point	2kHz
Impedance	Nominally 6 ohms
Enclosure Type	Bass reflex, front vented, sealed back
Dimensions	240mm diameter x 140mm deep
Mounting cut-out diameter	205mm
Finish	White (can be painted to match your décor)
Input terminals	Push type connectors
Weight	2kg each

atmospherix

out of sight experience



Taking on the challenge to create an unassuming high quality in-ceiling speaker, Krix presents the Atmospherix. Based on the Equinox, the Atmospherix uses the same 130mm bass driver matched with 25mm pivot tweeter housed in an enclosure for in-ceiling installation. The enclosed design maximises and controls bass response while keeping out dust and other ceiling inhabitants. Atmospherix are ideal for an out of sight home theatre experience.

---

*"With 7.1 channel systems now standard issue, a pair as centre rears positioned above and behind the couch would be perfect. Rear effects carry plenty of bass weight and substance in modern movie mixes, so if you fancy an in-ceiling design, it has to be able to reproduce the low stuff, which is something the Atmospherix do with ease."*

– Audio & Video Lifestyle – Australia

Frequency Range	45Hz - 20kHz in room response
Power Handling	Maximum 100 watts RMS amplifier power
Sensitivity	90dB for 2.83 volts at 1 metre
Configuration	5 inch 2-way
Bass Driver	Cast aluminium basket with a nominal 130mm (5") doped curvilinear paper cone. 25mm (1") voice coil wound on high powered aluminium former, with copper shorting ring. Vented and double magnet shielded
Tweeter	25mm (1") fabric dome, adjustable 'eyeball'
Crossover Point	2.1kHz
Impedance	Nominally 6 ohms
Enclosure Type	Bass reflex, front vented, sealed back
Dimensions	280mm diameter x 190mm deep
Mounting cut-out diameter	247mm
Finish	White (can be painted to match your décor)
Volume	8 litres internal
Weight	3kg each
Input terminals	Push type connectors

ecliptix

experience structural integration



The Ecliptix is a rectangular in-wall version of the Hemispherix and can be used as your main front and centre channels as well as for rear channel surrounds. The Ecliptix use the identical drivers and crossover network as in the Hemispherix and will provide precise tonal matching when installed with this in-ceiling model. Construct your own wall of sound with the Ecliptix.

Frequency Range	65Hz - 20kHz in room response
Power Handling	Maximum 60 watts RMS amplifier power
Sensitivity	86dB for 2.83 volts at 1 metre
Configuration	4 inch 2-way
Bass Driver	Nominal 100mm (4") doped paper cone. 25mm (1") voice coil wound on high temperature Kapton former
Tweeter	25mm (1") fabric dome, adjustable 'eyeball'
Crossover Point	2kHz
Impedance	Nominally 6 ohms
Enclosure Type	Bass reflex, front vented, sealed back
Dimensions	305mm high x 220mm wide x 100mm deep
Mounting cut-out diameter	275mm high x 190mm wide
Finish	White (can be painted to match your décor)
Input terminals	Push type connectors
Weight	2.5kg each

# On-Wall Speakers



Krix provide super audio reproduction capabilities from this slim and versatile on-wall speaker making it an ideal choice for two channel or home theatre systems. Available in a range of high gloss finishes, the Tryptix are easy to install by way of the mounting brackets supplied or with the floor and table stands, which are available as optional extras.

What better way to complement the clean look and style of your wall mounted plasma/LCD screen than with the Tryptix on-wall loudspeakers.



tryptix

experience acoustic versatility



Tryptix marry form and function in a stylish on-wall loudspeaker. Using dual 100mm bass drivers and a 26mm super audio tweeter the Tryptix present depth and clarity unsurpassed in a speaker of this type. Available in high gloss black, white or silver the Tryptix are designed to complement plasma / LCD installations or for any application where space is a consideration. Matching floor and table stands are also available making the Tryptix a highly versatile experience.

*"The term 'lifestyle' is used a lot these days with AV components and it can often mean a lot's been put into the look rather than the performance. Krix's new Tryptix addresses both in equal measure. They'll look good on the wall or native stands next to a shiny Plasma or LCD flat panel, but more importantly these are 'proper' home theatre loudspeakers."* – Audio & Video Lifestyle – Australia

Frequency Range	55Hz - 40kHz in room response
Power Handling	Maximum 100 watts RMS amplifier power
Sensitivity	88dB for 2.83 volts at 1 metre
Configuration	Point source dual 4 inch 2-way
Bass Driver	2 x nominal 100mm (4") doped paper cones. 25mm (1") voice coil wound on high temperature Kapton former
Tweeter	26mm (1") dual concentric diaphragm with wave-guide centre plug for controlled directivity. Neodymium magnet
Crossover Point	1.75kHz
Impedance	Nominally 4 ohms
Enclosure Type	Bass reflex, front vented with internal / external flaring
Dimensions	555mm high x 140mm wide x 125mm deep
Mounting	Wall-mount / stand-mount bracket is included
Material	5mm ribbed ABS
Finish	High gloss black, white or silver
Volume	5 litres internal
Input terminals	Push type connectors
Weight	4kg each
Accessories	A range of floor stands, table stands and centre channel stands are available in matching high gloss colours. An alternative colour grille is included.







Outdoor Speakers



Just because you are outside doesn't mean you have to suffer inferior quality sound. Krix's range of outdoor loudspeakers are fully weatherproof and meet IP standard 54 for dust and moisture resistance. Whether you are using them in commercial applications or beside the pool at home, Krix's outdoor speakers will deliver...come rain, hail or shine.



aquatix

experience alfresco



Krix has risen to the challenge of delivering high quality outdoor sound reproduction within a marine grade waterproof, all weather enclosure. Internal ribs reinforce the UV-stabilised polymer housing to minimise panel resonance. Special treatment beneath the mylar tweeter's dome improves high frequency response, while the bass driver is given a pre-determined operating range within the fully sealed cabinet, delivering fast, punchy bass. The speaker is fitted with an aluminium grille and mounting bracket, plus marine grade stainless steel hardware to protect against corrosion.

*"Positioning them outside, the Aquatix filled the immediate garden area with similar quality audio. Even my lovely neighbours commented on how good they sounded on their side of the fence. A couple of days after mounting them we had a nasty storm hit and the Aquatix faced some horrible wet weather. They survived unaffected, unlike the rest of the garden."* – Audio & Video Lifestyle – Australia

Frequency Range	70Hz - 20kHz on wall response
Power Handling	Maximum 80 watts RMS amplifier power. Polyswitch protection has been installed for the tweeter
Sensitivity	87dB for 2.83 volts at 1 metre
Configuration	5 inch 2-way
Bass Drivers	Nominal 130mm (5") polypropylene cone with rubber surround. 25mm (1") high temperature voice coil wound on a radial vented Kapton former
Tweeter	22mm (1") specially damped mylar dome with phase plug. Ferro fluid cooled
Crossover Point	3kHz
Impedance	Nominally 8 ohms
Enclosure Type	Sealed and gasketed waterproof trapezoid enclosure with internal bracing. Injection moulded with UV stabilizing
Dimensions	250mm high x 185mm wide x 190mm deep
Finish	Painted satin white or black
Input terminals	5 way hand tightened binding posts, nickel plated
Weight	2.5kg each including bracket
Mounting	Adjustable 'U' shaped aluminium bracket

NB: Image shows logo badge with vertical orientation.  
Product is supplied with horizontal orientation as standard.

tropix

experience the great outdoors



The Tropix build on the benchmark set down by the Aquatix waterproof outdoor design. Using a larger enclosure, bass driver and tweeter, the Tropix deliver more effortless bass energy in larger outdoor environments. Maintaining the same cabinet styling and attention to detail within the construction of this all weather enclosure, the Tropix make dining in the great outdoors a memorable experience.

<b>Frequency Range</b>	55Hz - 20kHz on wall response
<b>Power Handling</b>	Maximum 110 watts RMS amplifier power. Polyswitch protection has been installed for the tweeter
<b>Sensitivity</b>	87dB for 2.83 volts at 1 metre
<b>Configuration</b>	6 1/2 inch 2-way
<b>Bass Driver</b>	Nominal 165mm (6 1/2") polypropylene cone with rubber surround. 25mm (1") high temperature voice coil wound on a radial vented kapton former and copper shorting ring for lower distortion
<b>Tweeter</b>	26mm (1") specially damped mylar dome with phase plug. Ferro fluid cooled
<b>Crossover Point</b>	2.4kHz
<b>Impedance</b>	Nominally 8 ohms
<b>Enclosure Type</b>	Sealed and gasketed waterproof trapezoid enclosure with internal bracing. Injection moulded with UV stabilizing
<b>Dimensions</b>	305mm high x 220mm wide x 225mm deep
<b>Finish</b>	Painted satin white or black
<b>Input terminals</b>	5 way hand tightened binding posts, nickel plated
<b>Weight</b>	3.5kg each including bracket
<b>Mounting</b>	Adjustable 'U' shaped aluminium bracket

NB: Image shows logo badge with vertical orientation.  
Product is supplied with horizontal orientation as standard.

# accessories



## Qik Fix 5

The Qik Fix 5 is a tilt adjustable loudspeaker bracket featuring glass reinforced nylon construction for strength and durability. It is ideally suited to the Krix Brix loudspeaker, but may be attached to almost any loudspeaker weighing less than 5 kilos.

Material	Glass reinforced nylon
Finish	Black
Weight	Will hold loudspeakers up to 5 kilos
Mounting	Select wall anchors appropriate for the desired mounting surface and speaker weight. Wall anchor size must fit through 5mm bracket mounting holes. Two wall anchors are required per bracket assembly. Vertical tilt range +15 degrees to -20 degrees. Horizontal tilt range 180 degrees

## 100 volt line transformer

Generally used in background music or larger scale distributed audio systems. 100 volt line transformers allow multiple loudspeakers to be easily and safely connected in parallel to an amplifier at varying power levels as desired.

Frequency Range	35Hz - 18kHz (-3dB)
Power Handling	Maximum 20 watts RMS
Sensitivity	90dB for 2.83 volts at 1 metre
Configuration	100 volt line matching transformer with 5, 10, 15 and 20 watt power taps
Distortion – Input to speaker	0.02% THD at 1kHz - measured at full power with 4 ohm resistive load
Impedance	Suitable for nominally 4-8 ohm loudspeakers
Enclosure Type	Weatherproof moulded ABS plastic
Dimensions	50mm high x 56mm deep x 147mm wide
Finish	White
Input terminals	Isolated screw terminals with 600mm speaker lead
Weight	0.5kg

## choice of finishes

The Krix range is available in a variety of quality finishes. Choose from standard finishes such as black, american cherry or atlantic jarrah timber veneer. Alternatively, choose your own custom finish that can be made to order from an extensive range of timber veneers and paint lacquers.



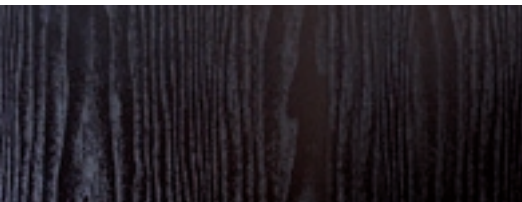
your choice



atlantic jarrah veneer



american cherry veneer



black veneer



Krix Loudspeakers Pty Ltd  
14 Chapman Road  
Hackham SA 5163  
Australia

T +61 8 8384 3433  
F +61 8 8384 3419  
listen@krix.com

INFORMATION CORRECT AS OF  
OCTOBER 2009. DUE TO CONTINUED  
DEVELOPMENT SPECIFICATIONS MAY  
CHANGE WITHOUT NOTICE. KRIX AND  
THE KRIX LOGO ARE TRADEMARKS  
OF KRIX LOUDSPEAKERS PTY LTD,  
REGISTERED IN AUSTRALIA AND  
OTHER COUNTRIES.



