

# SATURN

COLLECTION



*Stands out from the crowd,  
bends in with the home*

**CLIPSAL**  
LIVING ELECTRICAL

---

## Let the Sleek Look of Clipsal Saturn Define Your Sense of Style

Clipsal Saturn is a premium range of architecturally designed electrical accessories. Especially appealing to those who desire the latest styles and fashions.

The entire range has set new standards in home electrical accessories - offering switch and accessory design that is unlike any other 250V electrical accessory range on the market.

Clipsal Saturn is specifically designed to offer a seamless electrical solution for your home in Ocean Mist and Espresso Black colour variants.

When you see the diversity of the Clipsal Saturn Range you'll be amazed how it will complement every room of your home. Going beyond just wall switches and power outlets, the Clipsal Saturn Range offers a complete electrical accessory solution that gives superior functionality while enhancing your décor.

### Clipsal Saturn – Pioneering Push Button Technology

Clipsal is proud to be the first company in Australia to introduce innovative round push button design with their stunning range of Saturn 250V Wall Switches.

Clipsal Saturn's revolutionary push button technology gives you smooth reliable operation at the touch of a button, while incorporating inspirational architectural design.

Clipsal Saturn combines function, beauty and technology to create the most innovative and desirable push button switches on the Australian market.



*Stands out from the crowd,  
blends in with the home*



*A Reflection of Your Style*



## Clipsal Saturn Wall Switches

You'll love the luxurious look and feel of Clipsal Saturn wall switches, providing your home with a seamless style that is bound to turn heads. Clipsal Saturn wall switches will accommodate up to six individual switches and will complement any modern interior design.

Compared with other wall switches on the market, Clipsal Saturn wall switches are unique, offering silky smooth push button operation and an architecturally designed glass look fascia that not only looks great, but also is a breeze to clean.

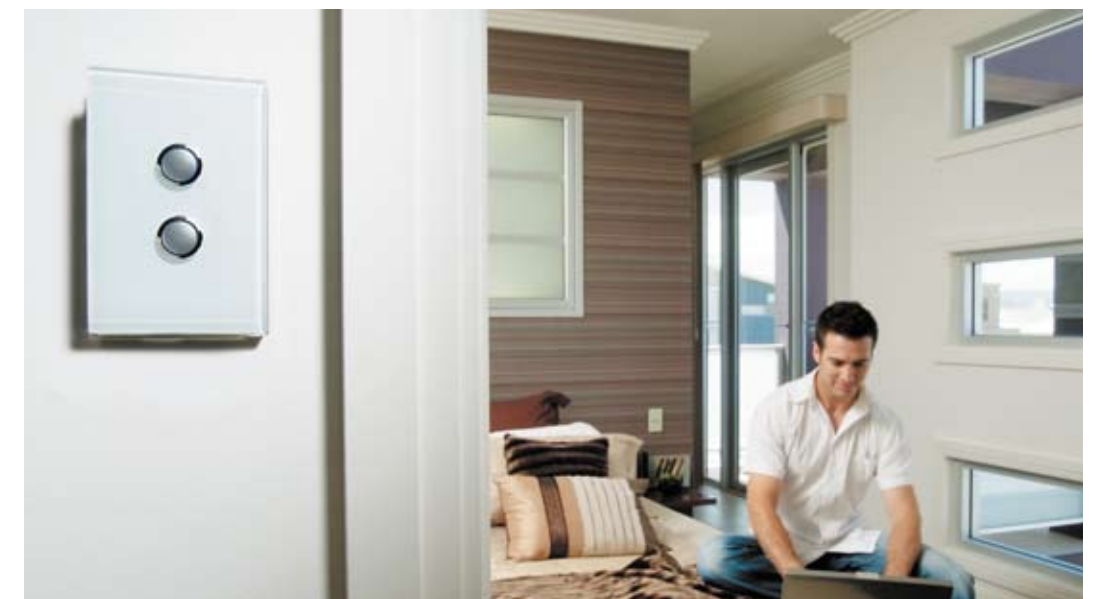
## Clipsal Saturn LED and Labelling Options

Too often when we need to turn a light on in the middle of the night we're left scrambling in the dark trying to find the wall switch. This scenario is not only difficult but could be potentially hazardous.

Whether you require a pilot light to find a wall switch in the dark or an indicator light to tell you which switch is in operation – Clipsal Saturn has it covered with subtle, 'soft glow' LED options.

## Clipsal Saturn Indicator Light

The Clipsal Saturn Indicator Light will conveniently turn on when the push button switch is activated, so you'll never have to guess which switch is in use.



## Clipsal Saturn Pilot Light

The Saturn Pilot Light has a permanent subtle, blue glow that illuminates the switch buttons for easy operation when you get caught in the dark.



## Clipsal Saturn Labelling

Clipsal Saturn switches are now also available with the option of handy labelled buttons, making it easy to know what each button does.

### LABELLED BUTTON CAP OPTIONS

2 X KITCHEN  
1 X BED  
1 X BED 1  
1 X BED 2  
1 X BED 3  
1 X BED 4  
1 X STUDY  
2 X EXHAUST

2 X BATH  
2 X GARDEN  
6 X FAN  
6 X LIGHT  
6 X HEAT  
2 X ENTRY  
2 X LAUNDRY  
2 X LOUNGE

2 X GARAGE  
2 X FAMILY  
2 X DINING  
2 X OUTSIDE  
2 X SENSOR  
2 X TOILET  
10 X CATS EYE  
BUTTON CAPS.





*The Perfect Blend*

## Clipsal Saturn Switched Sockets

Family, food, friends and fun are the perfect recipe in any modern kitchen. The stunning Clipsal Saturn Range is the ideal addition to complement and enhance this busy social hub in the home.

Clipsal Saturn Switched Sockets are 250V power outlets that allow the operation of all 250V electrical appliances.

Although Clipsal Saturn switched sockets work the same as a standard power outlet, the eye catching architectural design is far from standard. They will suit any modern home, blending beautifully with chrome, stainless steel and glass splash backs.



## Clipsal Saturn Dimmers

The living room is one part of the house that has many moods. Whether you require soft light while relaxing watching a movie, or full light while playing with the kids - Clipsal Saturn Dimmers will set the right mood any time of the day.

Clipsal Saturn Dimmers' sleek, stylish, looks give you complete lighting control without compromising your home's style. They'll also give you the advantage of energy efficiency, saving you money on power bills, while helping to save the planet.

*Turn the Lights Down Low*



## Architrave Switches

The striking new Clipsal Saturn Range offers a switch to suit every application, including convenient architrave switches.

The subtle narrow profile of the Clipsal Saturn Architrave Switch is specifically designed for areas where there is not enough space for standard switches.

They are the perfect solution for applications where wall space is limited, such as laundries, kitchen pantries, en-suites and bathrooms.



# *Shedding Light in Style*

## Clipsal Saturn Downlights

Lighting is one aspect around the home you want to get just right and the Clipsal Saturn Downlight Range will help you achieve this. Attention to detail makes the Clipsal Saturn Downlight Range the most stunning and fashionable downlight on the market.

The unique finish and design of Clipsal Saturn Downlights will shed light with style, enhancing the natural beauty of your home.



Round, Brushed Chrome Fitting,  
including glass fascia with inner frosting.



Round, Chrome Fitting,  
including glass fascia with inner frosting.



Round, White Fitting,  
including glass fascia with inner frosting.



# ACCESSORIES

## Accessories

### Communication Wall Plates

#### *Get Connected*

The stunning new Clipsal Saturn Range extends beyond just wall switches and power outlets. Clipsal Saturn Communication Wall Plates are architecturally designed, giving you easy access to television, audio, phone, computer and the internet without compromising your home's great looks.

(Note: Communication wall plates are supplied without data, television or audio mechanisms. They are sold as blank plates).



### Clipsal Saturn Cooker Switches

#### *Turn On the Heat*

Increase your home safety in style with the Clipsal Saturn Push Button Cooker Switch. The Clipsal Saturn Push Button Cooker Switch is the ideal option for isolating power to your electric bench-top cooker.

The Clipsal Saturn Push Button Cooker Switch will isolate power to your bench top cooker in an area that is convenient but out of the way from kitchen traffic. It also makes the perfect additional safety feature for cleaning on and around electric bench top cookers.



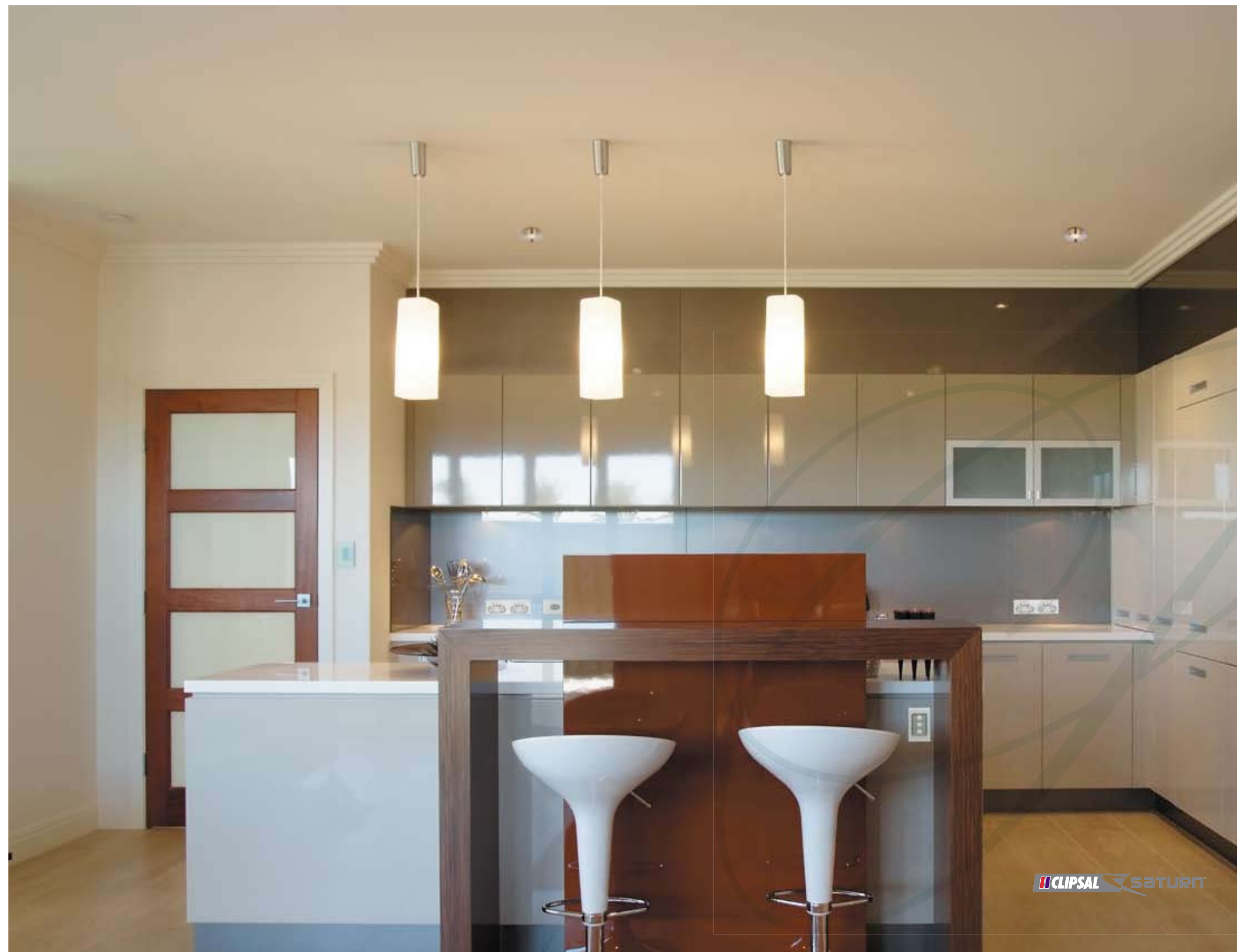
### Quad Switched Socket

#### *Power to Perform*

If you require multiple power outlets the Quad Switched Socket is the perfect option. Incorporating Clipsal Saturn's great looks with the convenience of a quad power outlet.

The Quad Switched Socket is ideal for providing power to the home entertainment system, kitchen appliances and anywhere you require multiple power outlets.

The benefit of extra spacing between the centre outlets makes it ideal for plug chargers.





# Synergi Solutions™

*Achieve Clipsal Saturn's stunning looks throughout your home*

Clipsal have cleverly teamed up with Australia's leading home accessory brands such as Caroma, WattyL and Gainsborough to create Synergi Solutions.

Synergi Solutions offer a complete home accessory solution, giving you an easy alternative when it comes to selecting electrical accessories, paint, bathroom accessories and door furniture.

Now the premium look of Clipsal Saturn can be achieved throughout your entire home by installing these fantastic accessories. A team of highly skilled interior decorators has taken the hassle out of colour matching and style creation, by pre-coordinating a range of products that are complementary and interchangeable – whatever you select will match!

For more information visit  
[synergisolutions.com.au](http://synergisolutions.com.au)

**synergi**  
SOLUTIONS



**CLIPSAL** SATURN™

**WATTYL**®

**caroma**®



*Gainsborough*  
fine quality door hardware



# STYLES & COLOURS

## Clipsal Saturn Colours will Set the Scene

The Clipsal Saturn Range of colours will blend in beautifully with any home environment. Whether your style is modern and minimal or classic and cosy, the Clipsal Saturn Range will create a seamless look and feel throughout your home. The Clipsal Saturn Range is available in:

Ocean Mist - **OM**  
Espresso Black - **EB**

## Clipsal Saturn Accessories

### SWITCH GRID PLATES AND COVERS

Accepts **60PB** & **60PBL** push button mechanisms

<b>4061VH</b>	Grid and cover assembly 1 gang less mech
<b>4062VH</b>	Grid and cover assembly 2 gang less mech (horizontal aperture orientation)
<b>4063VH</b>	Grid and cover assembly 3 gang less mech
<b>4064VH</b>	Grid and cover assembly 4 gang less mech
<b>4065VH</b>	Grid and cover assembly 5 gang less mech
<b>4066VH</b>	Grid and cover assembly 6 gang less mech

### SWITCH COVERS

Switch Covers Only - Saturn 4000 series

NOTE: 4060PB series covers suit both led & non-led variants.

<b>4060VXC</b>	Switch cover - blank
<b>4061PBC</b>	Switch cover 1 gang
<b>4062PBC</b>	Switch cover 2 gang
<b>4062PBHC</b>	Switch cover 2 gang - horizontal aperture orientation
<b>4063PBC</b>	Switch cover 3 gang
<b>4064PBC</b>	Switch cover 4 gang
<b>4065PBC</b>	Switch cover 5 gang
<b>4066PBC</b>	Switch cover 6 gang

### ARCHITRAVE MODELS

<b>4061</b>	Grid and cover assembly 1 gang less mech
<b>4062</b>	Grid and cover assembly 2 gang less mech

### ARCHITRAVE SWITCH COVERS

<b>4001C</b>	Switch Cover 1 Gang
<b>4002C</b>	Switch Cover 2 Gang

### ELECTRIC RANGE (COOKER) SWITCH COVERS

**4061/45C** Cooker switch cover , suits both 40A & 45A models

### SWITCH MECHANISMS

<b>60PB</b>	Push button switch mechanism, 20A/16AX, 250V a.c.
<b>60PBL</b>	Push button switch mechanism with LED, 20A/16AX, 250V a.c.

<b>30MD, 3A</b>	Double pole switch mechanism, 10A, 250V a.c. (suits 4030 Series range)
<b>30MI, 3A</b>	Intermediate switch mechanism, 10A, 250V a.c. (suits 4030 Series range)

### DIMMER MECHANISMS

<b>4062E450UDM</b>	Dimmer Universal Mechanism, 450W, 250V a.c.
--------------------	---

### LABELLED BUTTON CAPS

#### 60PBC

2 X KITCHEN  
1 X BED  
1 X BED 1  
1 X BED 2  
1 X BED 3  
1 X BED 4  
2 X EXHAUST  
2 X BATH  
2 X GARDEN  
6 X FAN  
6 X LIGHT  
6 X HEAT  
2 X ENTRY  
2 X LAUNDRY  
2 X LOUNGE  
2 X GARAGE  
2 X FAMILY  
2 X DINING  
2 X OUTSIDE  
2 X SENSOR  
2 X TOILET  
1 X STUDY  
10 X CAT'S EYE BUTTON CAPS

### Socket Covers and Surrounds

<b>4015C</b>	Cover power outlet single
<b>4025C</b>	Cover power outlet double (suits both 4025 & 4025X)
<b>4025H2C</b>	Cover power outlet quad
<b>4000H2</b>	Surround Two gang horizontal

### PAINT PROTECTOR

<b>4000PP</b>	Paint protector for Clipsal Saturn 250V and CIS Saturn ranges.
---------------	--

### MOUNTING FRAMES

#### 5850F



BLACK



WHITE



CREAM



DESERT SAND

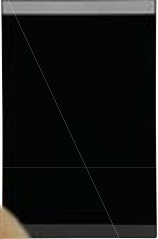


BROWN



SOFT GREY

## BLANK PLATES



**4060VX,EB**

Espresso Black

**4060VX,OM**

Ocean Mist

**4061PB,OM**  
Push-button Switch, 1 gang, Push-button, Ocean Mist, 20A/16AX, 250V a.c.

**4062PBH,OM**  
Push-button Switch, 2 gang, Push-button, Horizontal Plate, Ocean Mist, 20A/16AX, 250V a.c.

**4062PB,OM**  
Push-button Switch, 2 gang, Push-button, Ocean Mist, 20A/16AX, 250V a.c.

**4063PB,OM**  
Push-button Switch, 3 gang, Push-button, Ocean Mist, 20A/16AX, 250V a.c.

**4064PB,OM**  
Push-button Switch, 4 gang, Push-button, Ocean Mist, 20A/16AX, 250V a.c.



**4061PB,EB**  
Push-button Switch, 1 gang, Push-button, Espresso Black, 20A/16AX, 250V a.c.



**4062PBH,EB**  
Push-button Switch, 2 gang, Push-button, Horizontal Plate, Espresso Black, 20A/16AX, 250V a.c.



**4062PB,EB**  
Push-button Switch, 2 gang, Push-button, Espresso Black, 20A/16AX, 250V a.c.



**4063PB,EB**  
Push-button Switch, 3 gang, Push-button, Espresso Black, 20A/16AX, 250V a.c.



**4064PB,EB**  
Push-button Switch, 4 gang, Push-button, Espresso Black, 20A/16AX, 250V a.c.

## COMMUNICATION WALL PLATES



**4031VH,OM**  
Vert./Hor. 1 gang grid & plate, Ocean Mist, 20A/16AX, 250V a.c.



**4032VH,OM**  
Vertical/Horizontal 2 gang grid & plate assembly, Ocean Mist, 20A/16AX, 250V a.c.



**4033VH,OM**  
Vertical/Horizontal 3 gang grid & plate assembly, Ocean Mist, 20A/16AX, 250V a.c.



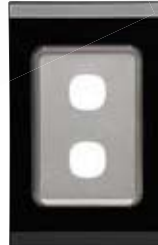
**4034VH,OM**  
Vertical/Horizontal 4 gang grid & plate assembly, Ocean Mist, 20A/16AX, 250V a.c.



**4036VH,OM**  
Vertical/Horizontal 6 gang grid & plate assembly, Ocean Mist, 20A/16AX, 250V a.c.



**4031VH,EB**  
Vertical/Horizontal 1 gang grid & plate assembly, Espresso Black, 20A/16AX, 250V a.c.



**4032VH,EB**  
Vertical/Horizontal 2 gang grid & plate assembly, Espresso Black, 20A/16AX, 250V a.c.



**4033VH,EB**  
Vertical/Horizontal 3 gang grid & plate assembly, Espresso Black, 20A/16AX, 250V a.c.



**4034VH,EB**  
Vertical/Horizontal 4 gang grid & plate assembly, Espresso Black, 20A/16AX, 250V a.c.



**4036VH,EB**  
Vertical/Horizontal 6 gang grid & plate assembly, Espresso Black, 20A/16AX, 250V a.c.

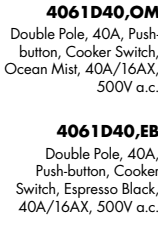
## DIMMERS



**4062E450UD,OM**  
Dimmer, Universal, Rotary Control, Separately Switched, 2 Gang Grid Switch and Dimmer Assembly, Ocean Mist, 220-240Vac, 450W.



**4062E450UD,EB**  
Dimmer, Universal, Rotary Control, Separately Switched, 2 Gang Grid Switch and Dimmer Assembly, Espresso Black, 220-240Vac, 450W.



**4061D40,OM**  
Double Pole, 40A, Push-button, Cooker Switch, Ocean Mist, 40A/16AX, 500V a.c.

**4061D40,EB**  
Double Pole, 40A, Push-button, Cooker Switch, Espresso Black, 40A/16AX, 500V a.c.



**4061/45,OM**  
Single Pole, 45A, Push-button, Cooker Switch, Ocean Mist, 20A/16AX, 250V a.c.



**4061/45,EB**  
Single Pole, 45A, Push-button, Cooker Switch, Espresso Black, 20A/16AX, 250V a.c.

## COOKER SWITCHES

## LED Push-button SWITCHES



**4061PBL,OM**  
Push-button Switch, 1 gang, Push-button, LED, Ocean Mist, 20A/16AX, 250V a.c.



**4062PBLH,OM**  
Push-button Switch, 2 gang, Push-button, Horizontal Plate, LED, Ocean Mist, 20A/16AX, 250V a.c.



**4062PBL,OM**  
Push-button Switch, 2 gang, Push-button, LED, Ocean Mist, 20A/16AX, 250V a.c.



**4063PBL,OM**  
Push-button Switch, 3 gang, Push-button, LED, Ocean Mist, 20A/16AX, 250V a.c.



**4064PBL,OM**  
Push-button Switch, 4 gang, Push-button, LED, Ocean Mist, 20A/16AX, 250V a.c.



**4065PBL,OM**  
Push-button Switch, 5 gang, Push-button, LED, Ocean Mist, 20A/16AX, 250V a.c.



**4066PBL,OM**  
Push-button Switch, 6 gang, Push-button, LED, Ocean Mist, 20A/16AX, 250V a.c.



**4061PBL,EB**  
Push-button Switch, 1 gang, Push-button, LED, Espresso Black, 20A/16AX, 250V a.c.



**4062PBLH,EB**  
Push-button Switch, 2 gang, Push-button, Horizontal Plate, LED, Espresso Black, 20A/16AX, 250V a.c.



**4062PBL,EB**  
Push-button Switch, 2 gang, Push-button, LED, Espresso Black, 20A/16AX, 250V a.c.



**4063PBL,EB**  
Push-button Switch, 3 gang, Push-button, LED, Espresso Black, 20A/16AX, 250V a.c.



**4064PBL,EB**  
Push-button Switch, 4 gang, Push-button, LED, Espresso Black, 20A/16AX, 250V a.c.



**4065PBL,EB**  
Push-button Switch, 5 gang, Push-button, LED, Espresso Black, 20A/16AX, 250V a.c.



**4066PBL,EB**  
Push-button Switch, 6 gang, Push-button, LED, Espresso Black, 20A/16AX, 250V a.c.

## SWITCHED SOCKETS



**4015,OM**  
Single Gang Switched Socket, Ocean Mist, 20A/16AX, 250V a.c.



**4015L,OM**  
Single Gang Switched Socket, Ocean Mist, 20A/16AX, 250V a.c.



**4025,OM**  
Power outlet double 250V, 10A, Ocean Mist, 20A/16AX, 250V a.c.



**4025X,OM**  
Power outlet double 250V, 10A, extra switch, Ocean Mist, 20A/16AX, 250V a.c.



**4025H2,OM**  
Power outlet double 250V, 10A, Extra Socket Outlet, Ocean Mist, 20A/16AX, 250V a.c.



**4025H2,EB**  
Power outlet double 250V, 10A, Extra Socket Outlet, Espresso Black, 20A/16AX, 250V a.c.



**4015,EB**  
Single Gang Switched Socket, Espresso Black, 20A/16AX, 250V a.c.



**4015L,EB**  
Single Gang Switched Socket, LED, Espresso Black, 20A/16AX, 250V a.c.



**4025,EB**  
Power outlet double 250V, 10A, Espresso Black, 20A/16AX, 250V a.c.



**4025X,EB**  
Power outlet double 250V, 10A, extra switch, Espresso Black, 20A/16AX, 250V a.c.

## ARCHITRAVE SWITCHES



**4061AL,OM**  
Architrave Switch Plate, 1 gang, Ocean Mist, 20A/16AX, 250V a.c.



**4062AL,OM**  
Architrave Switch Plate, 2 gang, Ocean Mist, 20A/16AX, 250V a.c.



**4061AL,EB**  
Architrave Switch Plate, 1 gang, Espresso Black, 20A/16AX, 250V a.c.



**4062AL,EB**  
Architrave Switch Plate, 2 gang, Espresso Black, 20A/16AX, 250V a.c.

## DOWNLIGHTS



**CDLSFGR,CH**  
Fixed, round, chrome glass fascia without flex and plug (with Hunter Transformer).

**CDLSFGR/FP,CH**  
As above with flex and plug.



**CDLSFGR,WE**  
Fixed, round, white glass fascia without flex and plug (with Hunter Transformer).

**CDLSFGR/FP,WE**  
As above with flex and plug.



**CDLSFGR,BC**  
Fixed, round, brushed chrome glass fascia without flex and plug (with Hunter Transformer).

**CDLSFGR/FP,BC**  
As above with flex and plug.





*blend in  
with  
the home*

## Clipsal Saturn Care Instructions

*A Little Care Goes a Long Way*

Caring for your Clipsal Saturn accessories is easy and will enable you to enjoy Clipsal Saturn's style for many years to come.

Simply wipe down the Clipsal Saturn fascia with a non-abrasive, warm damp cloth.

Although the entire Clipsal Saturn Range is manufactured from durable scratch and chemical resistant materials, please avoid using chemical cleaners.



### Clipsal Powerhouse Display Centres

Clipsal Powerhouse open  
9am to 5pm Monday to  
Friday. Visits and Clipspec  
consultations available by  
appointment only.

SA  
6/69 Sir Donald Bradman Drive  
HILTON SA 5033  
Ph: (08) 8269 0751

NSW  
4/142 James Ruse Drive  
ROSEHILL NSW 2142  
Ph: (02) 9891 6522

WA  
55 Salvado Road  
SUBIACO WA 6008  
(located in Home Base Expo)  
Ph: (08) 9347 3570

VIC  
83-89 Queens Parade  
NORTH FITZROY VIC 3068  
Ph: (03) 9207 3200

TAS  
262 York Street  
LAUNCESTON TAS 7250  
(located in Home Ideas Centre)  
Ph: (03) 6333 0660

### Home Ideas Centres

Adelaide Home Ideas Centre  
113 Anzac Highway  
ASHFORD SA 5035  
Ph: (08) 8297 1066

Geelong Home Ideas Centre  
252 Thompson Road  
NORTH GEELONG VIC 3215  
Ph: (03) 5278 8066

Melbourne Home Ideas Centre  
1686 Princes Highway  
OAKLEIGH VIC 3166  
Ph: (03) 9544 9611

Perth Home Ideas Centre  
City West 102 Railway Parade  
WEST PERTH WA 6005  
Ph: (08) 9481 1111

Brisbane Home Ideas Centre  
66 Merivale Street  
SOUTH BANK QLD 4101  
(opposite Convention Centre)  
Ph: (07) 3844 9922

Hobart Home Ideas Centre  
309 Liverpool Street  
HOBART TAS 7000  
Ph: (03) 6231 2522

Perth Home Base Expo  
55 Salvado Road  
SUBIACO WA 6008  
Ph: (08) 9388 1088

Sydney Home Ideas Centre  
61-63 O'Riordan Street  
ALEXANDRIA NSW 2010  
Ph: (02) 9304 4900

Launceston Home Ideas Centre  
262 York Street  
LAUNCESTON TAS 7250  
Ph: (03) 6333 0660

♻️ printed on recycled paper

#### Product of Clipsal Australia Pty Ltd

*A member of the Schneider Electric Group*

##### Head Office

12 Park Terrace, Bowden  
South Australia 5007  
Telephone (08) 8269 0511  
Facsimile (08) 8340 1724  
Internet [clipsal.com](http://clipsal.com)  
E-Mail [plugin@clipsal.com.au](mailto:plugin@clipsal.com.au)

**National Customer Service Enquiries:**  
**1300 2025 25**

**National Customer Service Facsimile:**  
**1300 2025 56**

#### International Enquiries

##### International Sales and Marketing

Telephone + 61 8 8269 0587  
Facsimile + 61 8 8340 7350  
E-Mail [export@clipsal.com.au](mailto:export@clipsal.com.au)

##### New Zealand

##### Clipsal Industries (NZ) Ltd

Telephone (09) 576 3403  
Facsimile (09) 576 1015  
E-Mail [headoffice@clipsal.co.nz](mailto:headoffice@clipsal.co.nz)

##### Customer Service

Free Fax (0508) 250 305  
Auckland/Mobile Phone (09) 572 0014  
Free Phone (0508) CLIPSAL  
2 5 4 7 7 2 5

You can find this brochure and many others  
online in PDF format at: [clipsal.com](http://clipsal.com)

Follow the links off the home page or access  
the following page directly:  
[clipsal.com/wat\\_lib\\_pdf.cfm](http://clipsal.com/wat_lib_pdf.cfm)

**clipsal.com**

Clipsal Australia Pty Ltd reserves the right to change  
specifications, modify designs and discontinue items  
without incurring obligation and whilst every effort is  
made to ensure that descriptions, specifications and  
other information in this catalogue are correct, no  
warranty is given in respect thereof and the company  
shall not be liable for any error therein.

© Clipsal Australia Pty Ltd.